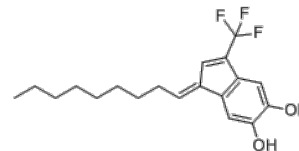


Product Name : E64FC26
Cat. No. : PC-21467
CAS No. : 2285446-62-8
Molecular Formula : C₁₉H₂₃F₃O₂
Molecular Weight : 340.38
Target : Protein Disulfide Isomerase (PDI)
Solubility : 10 mM in DMSO



Biological Activity

E64FC26 is a potent, pan-style PDI (**protein disulfide isomerase**) inhibitor with IC₅₀ of 1.9 μM (PDIA1), also inhibits all other members of the PDI family including PDIA3, PDIA4, TXNDC5, and PDIA6.

E64FC26 shows potent single-agent anti-MM activity with EC₅₀ of 0.59 μM.

E64FC26 is preferentially cytotoxic to MM cell lines over normal cell types.

E64FC26 induces ER and oxidative stress in MM cells and synergistically enhances the anti-MM cytotoxic effects proteasome inhibitors (PIs).

E64FC26 improved survival and enhanced the activity of bortezomib without any adverse effects in mice with MM.

References

Robinson RM, et al. *Leukemia*. 2019 Apr;33(4):1011-1022.

Hurst KE, et al. *Cells*. 2019 Nov 26;8(12):1514.

Caution: Product has not been fully validated for medical applications. Lab Use Only!

E-mail: tech@probechem.com